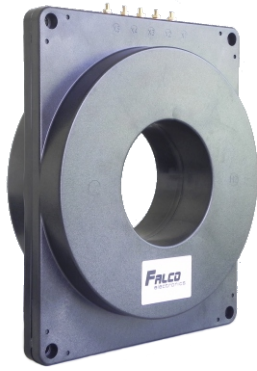


# INSTRUMENT CURRENT TRANSFORMER

5.70" Internal Diameter, Multi-Ratio

Width 3.94"



- Application - Relay and Metering
- Frequency 50 - 400 Hz
- AC capability 600 - 4000 Amperes
- Insulation class 0.6 kV, 10 kV BIL full wave
- Excitation curves upon request
- Secondary terminals are brass screws No. 10-32 with one flatwasher, lockwasher, accessible from either side
- Tested per ANSI/IEEE C57.13, CAN3-C13-M83 and IEC 61869-2 standards.

## ELECTRICAL SPECIFICATIONS

CATALOG NUMBER	CURRENT RATIO (A), (X1-X5)	RELAY CLASS	ANSI METERING CLASS AT 60HZ (X1-X5)					SECONDARY WINDING RESISTANCE (OHMS @75C), (X1-X5)	CURRENT RATING FACTOR @30C
			B0.1	B0.2	B0.5	B0.9	B1.8		
ICT11A06	600:5	C100	0.3	0.3	0.3	0.3		0.16	2.0
ICT11A20	800:5	N/A	0.3	0.3	0.3	0.3		0.22	2.0
ICT11A05	1200:5	C200	0.3	0.3	0.3	0.3	0.3	0.43	2.0
ICT11A16	1200:5	N/A	0.3	0.3	0.3	0.3	0.3	0.51	2.0
ICT11A15	1600:5	C400	0.3	0.3	0.3	0.3	0.3	0.66	2.0
ICT11A10	2000:5	C400	0.3	0.3	0.3	0.3	0.3	0.72	2.0
ICT11A03	2000:5	C400	0.3	0.3	0.3	0.3	0.3	0.73	2.0
ICT11A02	3000:5	C400	0.3	0.3	0.3	0.3	0.3	1.22	1.3

CATALOG NUMBER	CURRENT RATIO (A), (X1-X5)	RELAY CLASS	ANSI METERING CLASS AT 60HZ (X1-X5)					SECONDARY WINDING RESISTANCE (OHMS @75C), (X1-X5)	CURRENT RATING FACTOR @30C
			B0.1	B0.2	B0.5	B0.9	B1.8		
ICT11A07	600:5	C200	0.3	0.3	0.3	0.3		0.24	2.0
ICT11A01	1200:5	C400	0.3	0.3	0.3	0.3	0.3	0.63	2.0
ICT11A04	2000:5	C800	0.3	0.3	0.3	0.3	0.3	0.96	2.0
ICT11A08	3000:5	C800	0.3	0.3	0.3	0.3	0.3	1.60	1.3
ICT11A09	4000:5	C800	0.3	0.3	0.3	0.3	0.3	1.96	1.0

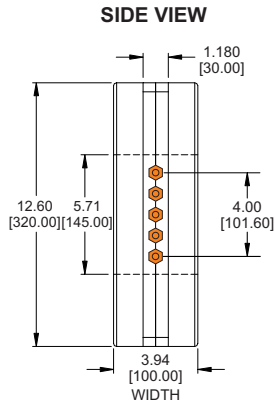
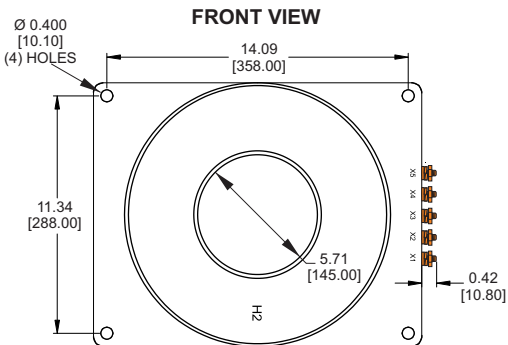
  

CATALOG NUMBER	CURRENT RATIO (A), (X1-X5)	RELAY CLASS	CAN METERING CLASS AT 60HZ (X1-X5)					SECONDARY WINDING RESISTANCE (OHMS @75C), (X1-X5)	CURRENT RATING FACTOR @30C
			B0.1	B0.2	B0.5	B0.9	B2.0		
ICT11A21	1200:5	2.5L400	0.3	0.3	0.3	0.3	0.3	0.63	2.0
ICT11A17	2000:5	2.5L200	0.3	0.3	0.3	0.3	0.3	0.61	2.0

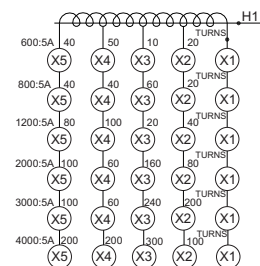
  

CATALOG NUMBER	CURRENT RATIO (A), (X1-X5)	RELAY CLASS	IEC METERING CLASS AT 60HZ (X1-X5)					SECONDARY WINDING RESISTANCE (OHMS @75C), (X1-X5)	CURRENT RATING FACTOR @30C
			2.5 V.A	5.0 V.A	12.5 V.A	30 V.A	50 V.A		
ICT11A11	1200:5	10P20 50VA	0.2	0.2	0.2	0.2		0.33	1.2
ICT11A19	1200:5	N/A	0.2	0.2	0.2	0.2		0.38	1.2
ICT11A13	1200:5	5P20 40VA	0.2	0.2	0.2	0.2	0.2	0.40	1.2
ICT11A14	1200:5	N/A	0.2	0.2	0.2	0.2	0.2	0.42	1.2
ICT11A18	1200:5	5P20 10VA	0.2	0.2	0.2	0.2	0.2	0.43	1.2
ICT11A12	2000:5	10P20 50VA	0.2	0.2	0.2	0.2	0.2	0.86	1.2

## MECHANICAL SPECIFICATIONS



## CONNECTION DIAGRAM



DIMENSIONS IN INCHES[MM]